



Match
Aligners

MediMatch
DENTAL LABORATORY
01 830 9375
www.medimatch.ie



€75
NEW PRODUCT

Match**Aligners**

SMILE WITH CONFIDENCE

Match**Aligners** are unlike metal braces. They are clear, removable, comfortable and convenient. As a leading clear brace manufacturer, we use the latest digital scanning technology, custom made for you. Match**Aligners** clear braces fit with your lifestyle and only you will know that you are wearing them.

JUST €75 PER ALIGNER

01 830 9375
www.medimatch.ie

MediMatch
DENTAL LABORATORY

MediMatch
accepts stl
files from
any 3 shape
scanner

scan in
colour



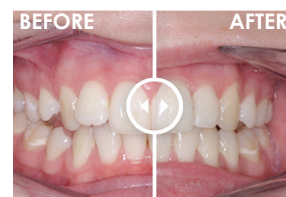
What are MatchAligners?

MatchAligners are an invisible way to straighten your teeth. Also known as clear braces, clear aligners, invisible braces or invisible aligners, each clear aligner moves your teeth a small amount until the required position is achieved. MatchAligners are created using the latest digital technology and manufactured to your dentists' prescription using crystal clear, impact resistant orthodontic grade materials.

CASE EXAMPLES

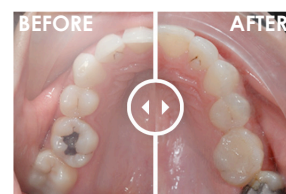
This patient did not like the fact that their upper lateral tooth stuck out, compared to their other teeth. A combined approach of MatchAligners and interproximal reduction was used to successfully treat this simple case.

Treatment time: 3 months



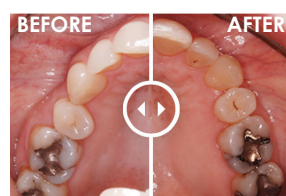
This patient requested MatchAligners to improve their upper and lower teeth. The upper arch was moderately overcrowded and the lower mildly overcrowded. Both arches were treated with MatchAligners and some conservative interproximal reduction. After aligner treatment, the Dentist complemented the patients' new smile by replacing the metal fillings with white fillings, and improving the appearance of the upper central teeth with tooth coloured composite.

Treatment time: 4.5 months



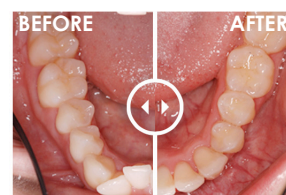
MatchAligners are not just suitable for the younger generation! This mature patient suffered from overcrowding on their upper and lower arches. A great result was achieved by using a series of clear MatchAligners to rotate and tip the teeth into their new position. In addition to moving the front teeth, the upper pre-molars were also moved in order to improve the patients' bite. A fixed retainer is visible on the lower teeth – retainers are essential to reduce the risk of relapse.

Treatment time: 7 months



A dramatic result for this patient who required a lower front tooth to be extracted in order to solve the severe overcrowding issue. The upper teeth were also treated with MatchAligners due to the mild overcrowding. The upper central restoration was replaced by the Dentist at a later date.

Treatment time: 9 months



Will it hurt?

You will feel a moderate pressure on your teeth for the first 2-3 days of wearing a new MatchAligner, but this will subside once the teeth have settled into their new position.

How long do I have to wear each MatchAligner?

You should wear your aligners as per your clinicians' instructions but usually 20-22 hours per day and normally 2 weeks per aligner.

How long does treatment take with MatchAligners?

Every case is different and every patient is unique so treatment times vary, but typical treatment times are 3-12 months.

Can I eat while wearing MatchAligners?

No, remove your aligner before eating and drinking (except cold water).

How do I clean my MatchAligner?

Clean your aligner using a soft bristle brush and a small amount of toothpaste, rinsing thoroughly with cold water.

What happens if I break one of my MatchAligners?

Don't worry, because our system is completely digital, replacement aligners can be recreated without the need for another impression from your dentist.

MediMatch
accepts stl files
from any 3 shape
scanner



scan in
colour



Practice marketing leaflet with your logos available upon first order.

1) Price is correct on day of going to press. 2) MediMatch is in no position to give clinical advice. Each prescriber should take full responsibility for the treatment of their patient regardless of any information provided by MediMatch in written or verbal format. Advice given by MediMatch is based on ideal situations and never on individual cases and it is therefore up to the prescriber to decide what is best for each individual case/patient.

01 830 9375
www.medimatch.ie

MediMatch
DENTAL LABORATORY